

# S/PS 142

---

Eugenio Gerli  
.66

# S/PS 142



## INTRO

The 142 Series, designed by Eugenio Gerli, is greatly appreciated for its functionality and its ability to blend into all kinds of domestic, work and hospitality environments. The 142 Series has stood the test of time and become a classic Tecno product.

The series was conceived to satisfy the demand that arose as the result of the revolution in home design that began in the 1960s, when the lounge, dining room and relaxation area all began to merge into one multi-purpose space.

142 Series chairs come in a higher, more upright version (the S142) and in the lower, more enveloping armchair (the PS142). Both have a metal structure, are fully upholstered in fabric or leather covered polyurethane foam, and can be fitted with wheels or feet.

## DESIGNER

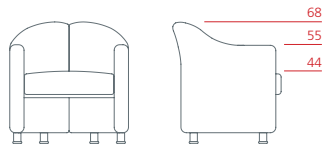


Eugenio Gerli

# S/PS 142



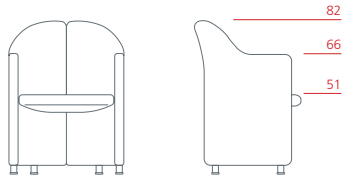
Armchair on castors  
**1PS6011:** L 68 D 60 H 68



Armchair on feet  
**1PS6012:** L 68 D 60 H 68



Tall armchair on castors  
**1PS6021:** L 57 D 56 H 82



Tall armchair on feet  
**1PS6022:** L 57 D 56 H 82

# S/PS142

## UPHOLSTERY

---

See the following fabrics and leathers list

## Fabrics 1/4

### TC (Category 01)

---

CUSTOM

CUSTOMER OWN FABRIC

### LANI (Category 02)

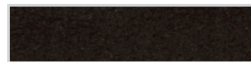
---



LIGHT GREY



DARK GREY



BLACK



BROWN



OCHRE



MUSTARD



ORANGE



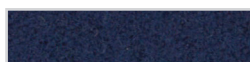
LIGHT RED



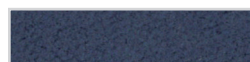
DARK RED



LIGHT BLUE



DARK BLUE



POWDER BLUE

# Fabrics 2/4

## FIELD (Category 02)

---



BLACK - WHITE



GREEN GREY



BLACK



CHALK



SAND



YELLOW



RED



PURPLE



BLUE PURPLE



PETROLEUM BLUE



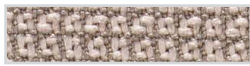
LIGHT GREEN



KIWI GREEN

## METRIC (Category 02)

---



GREEN GREY



SAND



BROWN



MAGENTA



RED



ORANGE



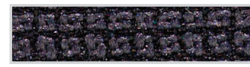
YELLOW



GREEN



OLIVE GREEN



BLACK - GREY



DARK GREY



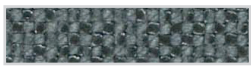
CLASSIC BLUE

## HOT (Category 02)

---



WHITE



DARK GREY



BLACK



CREME



SAND



BROWN



YELLOW



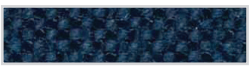
OCBRE YELLOW



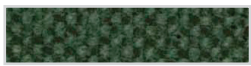
ORANGE



PURPLE



CLASSIC BLUE

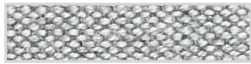


OLIVE GREEN

# Fabrics 3/4

## REMIX (Category 02)

---



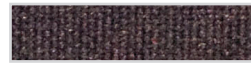
LIGHT GREY



GREY



SAND



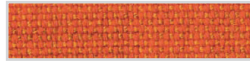
BURGUNDY



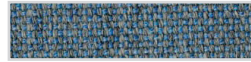
COFFE



EARTH



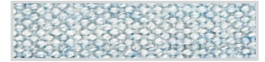
ORANGE



BLUE SKY



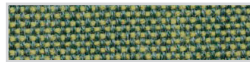
PETROLEUM BLUE



AQUAMARINE



LIGHT GREEN



GREEN

## STEELCUT TRIO (Category 03)

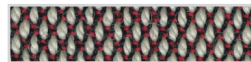
---



WHITE - BLACK



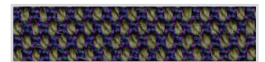
WHITE - GREY



WHITE - RED



BEIGE



BROWN - PURPLE



OCHRE YELLOW



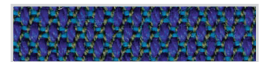
ORANGE



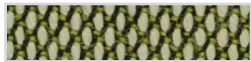
MAGENTA



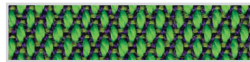
ICE



PURPLE - TURQUOIS



GREEN - WHITE



GREEN - PURPLE

## STEELCUT 2 (Category 03)

---



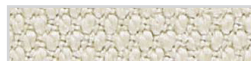
CREME



GREEN GREY



BLACK



KHAKI



BROWN



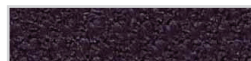
YELLOW



ORANGE



RED



AUBERGINE



CLASSIC BLUE



LAWN GREEN



OLIVE GREEN

# Fabrics 4/4

## DIVINA (Category 03)

---



CHALK



BLACK



SAND



YELLOW



ORANGE



RED



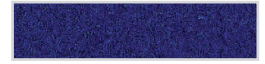
MAGENTA



PURPLE



ELETTRIC BLUE



CLASSIC BLUE



LIGHT GREEN



KIWI GREEN

## HALLINGDAL (Category 03)

---



CREME



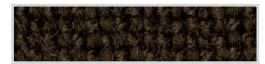
GREY



BLACK - GREY



BROWN - GREY



BROWN



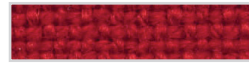
OCHRE YELLOW



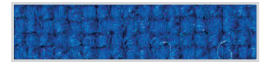
ORANGE



ORANGE - MARS



RED



ELETTRIC BLUE



PURPLE

# Leather

## LEATHER (Category 04)

---



WHITE



CHALK



CREME



SAND



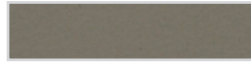
SAHANA



KHAKI



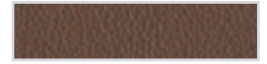
HEMP



BRACCO



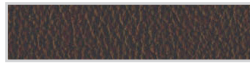
GREY



COCOA



BLACK TEA



COFFEE



DARK GREY



SLATE GREY



BLACK



MIDNIGHT BLUE



BLUE



DARK GREEN



OLIVE



AVOCADO



CREAM



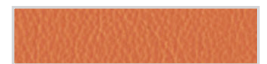
OCHRE YELLOW



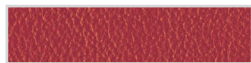
MANGO



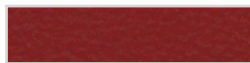
GRAPEFRUIT



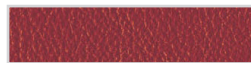
ORANGE



RED



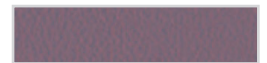
CRIMSON



DARK RED



BLACKBERRY



MAUVE